

CASIO FX-602P OPERATION GUIDE

Key Index

- **PO — P4, INV P5 — INV P9** (represented as **Pn**):
Program keys
- **MODE 1**: RUN mode
The mode of step-by-step and programmed operation and debugging
- **MODE 2**: WRT mode
The mode of writing (loading) and checking program and changing program number
- **MODE 3**: PCL mode
For deleting all or specific programs
- **MODE 4** (71) (72) (mn: 20 — 80):
Assignment of numbers of memories.
Assigns a combination of memories (22 — 88)/program steps (512 — 32).
(MODE 4) (4) (4): Confirms the assigned number of memories.)
- **INV ALPHA MODE**: ALPHA mode
For inputting alphabetical characters and symbols. Releases ALPHA mode when re-pressed.
- **HLT**: HALT
Execution comes to a halt at the current step.
- **PAUSE**: PAUSE
Execution comes to a temporary halt and, in about a second, restarts automatically.
- **IND**: INDIRECT
Indirect addressing is assigned.
When
“M 03” = 5, IND X ↔ M 03 is equivalent to X ↔ M 05
“M 02” = 7, IND GOTO 2 GOTO 7
“M 00” = 8, IND GSB 0 GSB P 8
“M 00” = 3, “M 03” = 10, IND DSZ “M 03” = 9
“M” means the content of the M-register.
- **ABS**: ABSOLUTE
Absolute value

- **INT**: INTEGER
Integer part (fraction removed)
- **FRAC**: FRACTION
Fraction part (integer part removed)
- **RND**: ROUND
RND 4 rounds up the fifth digit if it is greater than four and off otherwise into a four-digit number.
- **RND FIX**: FIX
RND FIX 3 rounds up the 4th decimal place if greater than four and off otherwise to 3 decimal places.
- **RAN#**: RANDOM NUMBER
A 3-digit random number of 0.000 to 0.999 is generated.
- **R→P**: Rectangular-to-polar coordinate system conversion
 x (INV) $\frac{r}{\theta}$ y $\frac{r}{\theta}$ for r , (INV) $\frac{x+y}{\theta}$ for θ
- **P→R**: Polar-to-rectangular coordinate system conversion
 r (INV) $\frac{r}{\theta}$ θ for x , (INV) $\frac{x+y}{\theta}$ for y
- **%**: Add-on a \times b (INV) $\frac{\%}{\pm}$ \rightarrow for a with b % add-on
Discount a \times b (INV) $\frac{\%}{\pm}$ \rightarrow for a discounted b%
Ratio a \div b (INV) $\frac{\%}{\pm}$ \rightarrow How many percent is a to b?
Variation rate. a \pm b (INV) $\frac{\%}{\pm}$ \rightarrow How many percent is a+b to b?
Variation rate. a \pm b (INV) $\frac{\%}{\pm}$ \rightarrow How many percent is b larger (or smaller) than a?
(SAVE and LOAD are not used unless the optional FA-1 adaptor is connected.)

Basic operation

To write program

In WRT mode Pn then command keys in the sequence of program

(MODE Z INV Pn) : For writing a pass word.)

To check program

In WRT mode Pn then FST or BST (Keep FST or BST pressed to advance or back up fast.)

To debug program

In RUN mode CSB Pn FST FST FST
(When BST is pressed, command is displayed.)

To delete program

To delete all programs: In PCL mode INV MAC

To delete program Pn : In PCL mode Pn AC

To change program number

In WRT mode Pn C Pm (to change n to m)

To terminate programmed operation

During halt ("HLT" displayed) MODE 1

During execution ("—" displayed) AC

To release error status ("Error" displayed)

AC BST (keep pressed until the pertinent command is found)

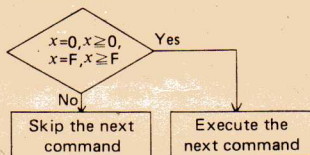
Causes of error:

- (1) Overflow (Exponent exceeds 99.)
- (2) Illegal argument of function (square root or \ln of a non-positive number, inverse of zero, etc.)
- (3) Undefined destination of jump.
- (4) A called sub routine is undefined.
- (5) Overflow (L-Register for Algebraic and true algebraic logic).

Jump

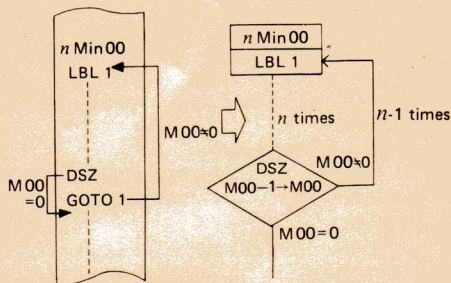
$x = 0, x \geq 0, x = F, x \geq F$

Execute the next command if the condition is met; otherwise skip it.



DSZ: Decrement M00.

- ISZ: Increment M00 and, execute the next command unless "M00" is 0; otherwise skip it.



Alphabetical Comment

- In the ALPHA mode, each key represents an alphabetical character or a symbol shown in green on the keyboard panel.
- (INV A to Z) : Small letters "a" to "z".
- INV SP : Links to the previous alphabetical comments
- INV M : Substitutes displayed number(s) into the alphabetical comments.
- INV FST AR TZ : Substitutes contents of the Mn -register into the alphabetical comments.