

Basic operation

To write program

In WRT mode Pn then command keys in the sequence of program

(MODE Z INV Pn) : For writing a pass word.)

To check program

In WRT mode Pn then FST or BST (Keep FST or BST pressed to advance or back up fast.)

To debug program

In RUN mode CSB Pn FST FST FST
(When BST is pressed, command is displayed.)

To delete program

To delete all programs: In PCL mode INV MAC

To delete program Pn : In PCL mode Pn AC

To change program number

In WRT mode Pn C Pm (to change n to m)

To terminate programmed operation

During halt ("HLT" displayed) MODE 1

During execution ("—" displayed) AC

To release error status ("Error" displayed)

AC BST (keep pressed until the pertinent command is found)

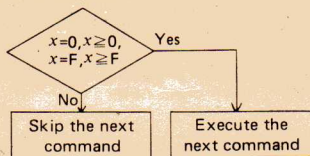
Causes of error:

- (1) Overflow (Exponent exceeds 99.)
- (2) Illegal argument of function (square root or \ln of a non-positive number, inverse of zero, etc.)
- (3) Undefined destination of jump.
- (4) A called sub routine is undefined.
- (5) Overflow (L-Register for Algebraic and true algebraic logic).

Jump

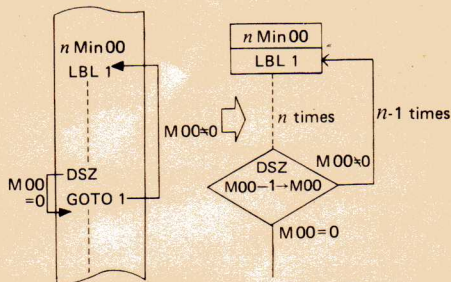
$x = 0, x \geq 0, x = F, x \geq F$

Execute the next command if the condition is met; otherwise skip it.



DSZ: Decrement M00.

- ISZ: Increment M00 and, execute the next command unless "M00" is 0; otherwise skip it.



Alphabetical Comment

- In the ALPHA mode, each key represents an alphabetical character or a symbol shown in green on the keyboard panel.
- (INV A to Z) : Small letters "a" to "z".
- INV SP : Links to the previous alphabetical comments
- INV F : Substitutes displayed number(s) into the alphabetical comments.
- INV FST TR : Substitutes contents of the Mn -register into the alphabetical comments.